

# Checklist For Finding The Right Intranet In 2025

---



## 01 User Experience & Engagement

- ☐ **User-Friendly Interface** – Intuitive and easy-to-navigate design
- ☐ **Personalisation Options** – Tailored news feeds, dashboards, and user profiles
- ☐ **Engagement Features** – Likes, comments, polls, and quizzes
- ☐ **Mobile App Availability** – Fully functional mobile app for on-the-go access
- ☐ **Multi-Device Support** – Accessible via desktop, mobile, and info screens
- ☐ **High Adoption Rates** – Proven track record of strong employee engagement
- ☐ **Custom Branding Capabilities** – Aligns with your corporate identity



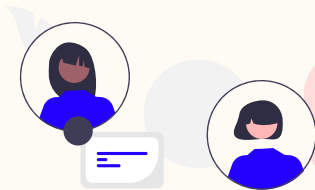
## 02 Productivity & Integration

- ☐ **Seamless System Integration** – Integration with Outlook, Teams, SharePoint
- ☐ **Efficient Document Management** – Smart file and version management
- ☐ **Enterprise Search Functionality** – Fast, intelligent search across content
- ☐ **Robust API & Data Integration** – Support for third-party tools and APIs
- ☐ **Integration with Existing Systems** – Works alongside existing platforms
- ☐ **Scalable for Growth** – Adaptable to meet organisational changes

## 03 Security & Compliance



- ☐ **Advanced Security & Compliance** – ISO 27001 certification, GDPR compliance
- ☐ **Data Privacy & Sovereignty** – Secure data with sovereign hosting options
- ☐ **Cloud & On-Premise Options** – Flexible hosting to fit your IT strategies
- ☐ **Access Control & User Permissions** – Granular control for data security
- ☐ **Ransomware Protection & Backups** – Ensures business continuity



## 04 Collaboration & Communication

- ☐ **Efficient Internal Communication** – Reduces email overload via central channels
- ☐ **Knowledge Sharing Tools** – Wikis, newsfeeds, and collaborative workgroups
- ☐ **Collaboration Tools** – Chat, task management, and project coordination
- ☐ **Onboarding & E-Learning Tools** – Built-in modules to support employee training
- ☐ **Automated Notifications & Alerts** – Real-time updates via push notifications

## 05 Analytics & Support



- ☐ **Analytics & Insights Dashboard** – Track engagement, content performance
- ☐ **Strong Customer Support** – Dedicated team for onboarding and maintenance
- ☐ **Seamless Implementation Process** – Quick setup tailored to business needs
- ☐ **Multilingual Support** – Auto-translation features for global teams